

SCORPION LOCATE OBJECT VISION APP

SCOPE

The Scorpion Locate Object Vision App locates an object and returns the position in x- and y-coordinates. It is perfect and very useful in object localisation, an important and common task in machine vision.

The Scorpion Vision App turns the Smart Camera from Sony into a complete vision solution.

APP FEATURES

Scorpion Vision Apps define a completely new entry level in Machine Vision designed for Scorpion Vision Integration and Scorpion Vision OEM.

COMMON FEATURES FOR SCORPION VISION APPS

- Internet Download
- Internet Upgrade
- Deployment with Scorpion Installer
- Based on proven Scorpion Vision Framework
- Licensed to the camera
- Development with Scorpion SDK
- OEM Development upon request



 **Scorpion Vision Products**

Product no.
SVA-2011-0004-LocateObject

SPECIFICATION

The Scorpion Locate Object Vision App is easy to use. It has a simple operator screen, and is easy to configure without machine vision knowledge.

The app can do the following:

- Locates an object
 - The object is located using a blob tool
 - The size of the object to locate is user defined
- The center position (x,y) and the rotation angle is found
- User defined coordinate system
- Configurable IO with RS-232 and TCP/IP



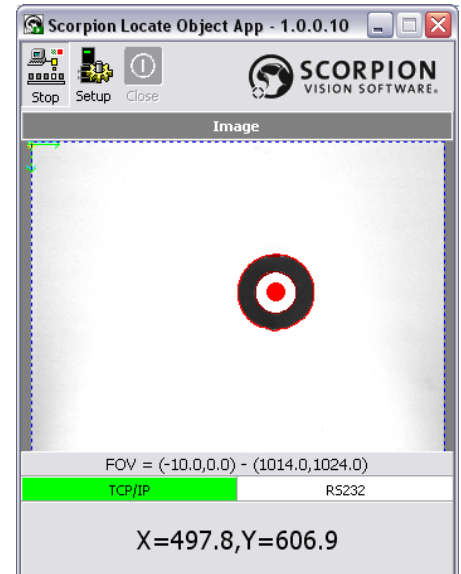
The app runs on Smart Cameras from Sony.

APPLICATION AREAS

The Vision App is designed to be used in:

- Object Location
- Position Verification

The Vision App is easy to deploy and to get working with the powerful Smart Camera from Sony.



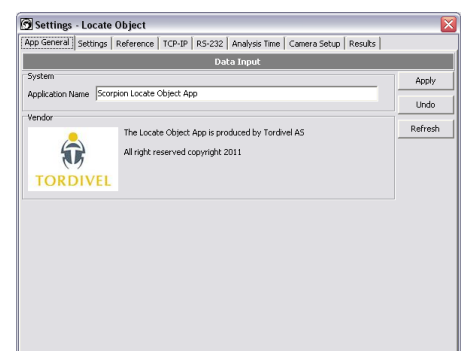
Scorpion Locate Object Vision App User Interface

CONFIGURATION

The configuration Settings panels are password protected accessible via the Setup button. The panels are easy to use and understand.

GENERAL

The Apps General panel gives information about the vendor. The application name can be defined in this panel.



The App General Settings

SETTINGS

This panel defines the core image processing setup of the App.

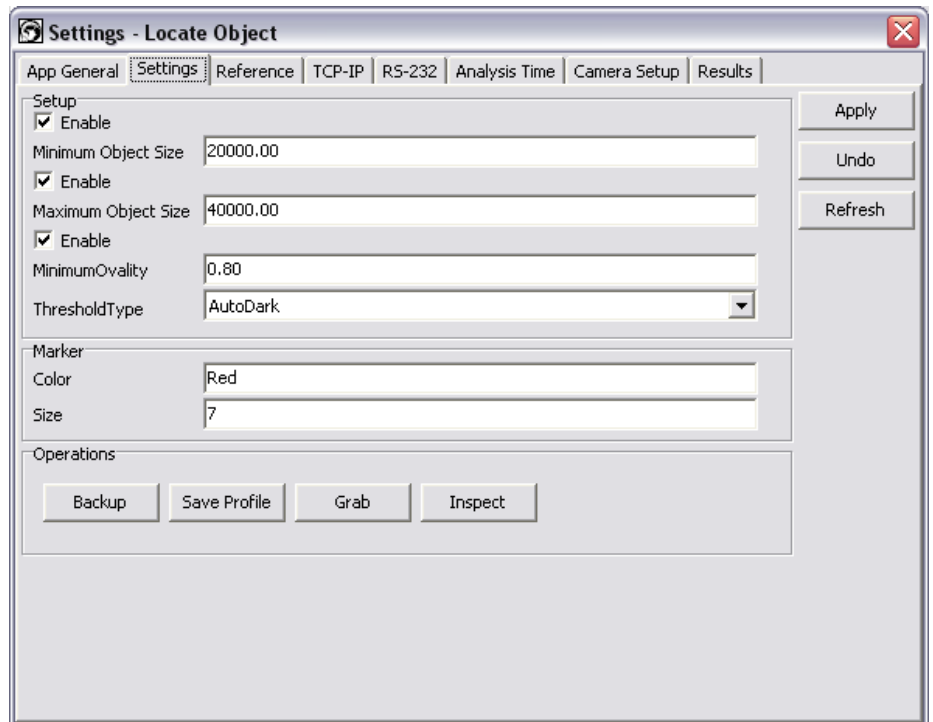
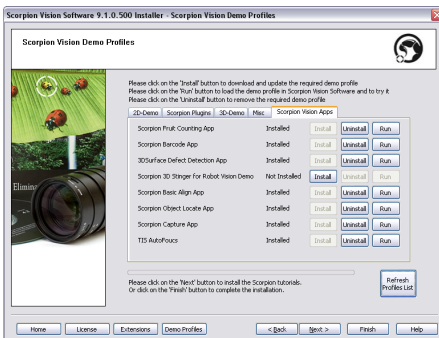
The minimum and maximum size of the object to be found is given together with a minimum ovality factor. All constraints can be enabled or disabled individually. The threshold type specifies if the app shall look for an object darker or brighter than the background.

The appearance of the visualisation in the app user interface is defined by the marker. The color and size can be set.

SCORPION INSTALLER

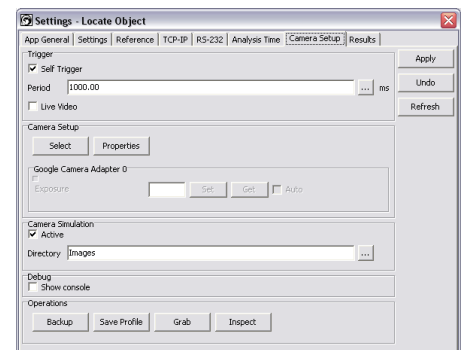
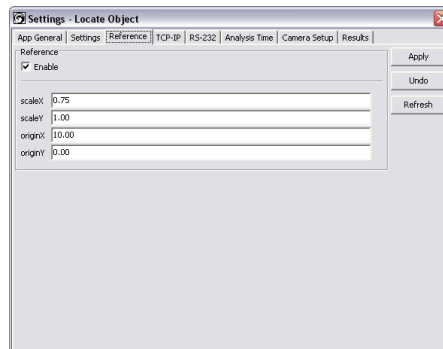
The Scorpion Vision Installer manages the Vision Apps installation. The Installer installs first the complete Scorpion Vision Framework and provides tutorials to learn more about Scorpion Vision and Vision Apps.

The Scorpion Vision Apps are downloaded, installed and updated from the Scorpion Server over the Internet.



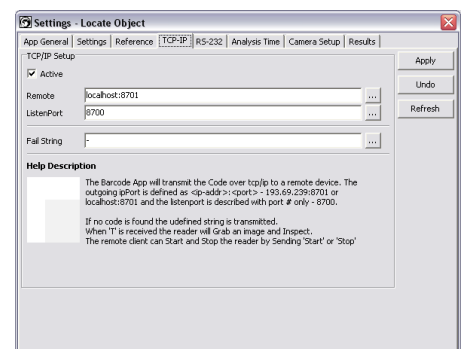
REFERENCE

The reference system is user defined with a default pixel reference system.



TCP/IP OR RS-232

The App transmits the object location over RS-232 or/and TCP/IP to any host system. The configuration below shows the options for the TCP/IP connection.



CAMERA SETUP

The camera settings are managed over a specific interface for the Smart Camera from Sony. The Scorpion Vision App supports internal, hardware and command based triggering over RS-232 or TCP/IP. Both monochrome and color images are supported.

To verify the App Setup, offline camera simulation mode is available. All camera properties are managed from the Camera Setup panel.

For more information:

Tordivel AS
 Phone +47 2315 8700
 Fax +47 2315 8701
 office@tordivel.com
 www.scorpionvision.com



Scorpion Vision Software® is a registered trademark of Tordivel AS.
 © 2011 Tordivel AS